

Premium Water Tank Range

Premium Corrugated Tanks



Features

- One piece construction.
- Attractive Heritage design.
- Corrugated for strength and traditional appearance.
- UV stabilised to withstand our harsh climate.
- Durable and impact resistant polyethylene for long life.
- Manufactured in guidance with Australian standards.
- Self supporting lid design eliminates need for centre support pole.
- Available in all standard colours.

Premium Corrugated Tanks

Code	Capacity Litres	Gallons	Diameter (mm)	Wall Height (mm)	Total Height (mm)	Retail Pricing (inc GST)
RT1000	1000	220	1000	1350	1550	\$533.50
RT2500	2500	550	1400	1785	2050	\$800.80
RT2500S	2500	550	1850	950	1250	\$800.80
RT3500	3500	770	1600	1800	2150	\$994.40
RT4500	4500	1000	1850	1800	1825	\$1,035.10
RT4500S	4500	1000	2420	1050	1350	\$1,131.90
RT9000	9000	2000	2420	2100	2430	\$1,736.90
RT9000S	9000	2000	2950	1375	1825	\$1,853.50
RT9500	9500	2100	2600	1800	2150	\$1,898.60
RT13500	13500	3000	2950	1875	2325	\$2,201.10
RT22500	22500	5000	3550	2350	2825	\$2,997.50
RT32000	32000	7050	3925	2400	3000	\$4,225.10
RT45000	45000	10000	Tank Combination (2 x RT22500)			\$5,886.10
RT64000	64000	14100	Tank Combination (2 x RT32000)			\$8,289.60

Premium Flat Walled Tanks



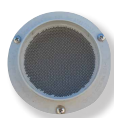
Features

- One piece construction.
- Sturdy, Reliable and built to last.
- UV Stabilised to withstand our harsh climate.
- Supplied with screw in lid, overflow outlet and ball valve.
- Manufactured in guidance with Australian standards.
- Self supporting lid eliminates need for centre support pole.
- Available all standard colours

Premium Flat Walled Tanks

Code	Capacity Litres	Gallons	Diameter (mm)	Wall Height (mm)	Total Height (mm)	Retail Pricing (inc GST)
JRR5300	5300	1200	1800	2000	2150	\$1,247.40
JRR10500	10500	2400	2495	2400	2450	\$2,336.40
JRR14000	14000	3100	2495	3000	3100	\$2,402.40
JRR25000	25000	5500	3825	2050	2450	\$3,179.00
JRR30000	30000	6600	3500	3030	3500	\$3,775.20
JRR50000	50000	11100	4600	2900	3450	\$7,691.20

Standard Fittings



**90mm PVC
Mesh Overflow**



Ball Valve



Screw On Lid



Brass Outlet

Slimline Tanks



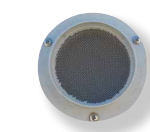
Features

- Attractive space saving design.
- Ideal for under eave line or pathway situations.
- Manufactured in guidance with Australian standards.
- Available in all standard colours.

Slimline Tanks

Code	Description	Dimensions (mm)	Wall Height (mm)	Total Height (mm)	Retail Pricing (inc GST)
RTS800	800ltr Slimline Tank	625 1250	1300	1450	\$589.60
RTS1500	1,500ltr Slimline Tank	875 1325	1950	2000	\$776.60
RTS3000	3,000ltr Slimline Tank	805 2615	2070	2120	\$1,430.00

Standard Fittings



90mm PVC Mesh Overflow



Strainer Basket



Bib Cock Tap



25mm Brass Outlet (for tap)



Screw On Lid



25 mm Drain Bung

Standard Tank Colours



Black
(Night Sky®)



Monument
(Charcoal)



Metal Gray
(Ironstone®)



Dark Grey



Slate Grey
(Woodland Grey®)



Heritage Red
(Manor Red®)



Stormedge Blue
(Blue Ridge®)



Mountain Blue
(Deep Ocean®)



Mist Green
(Pale Eucalypt®)



Rivergum
(Wilderness®)



Heritage Green
(Cottage Green®)



Smooth Cream
(Classic Cream™)



Merino
(Paperbark®)



Beige



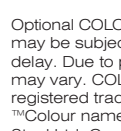
Desert Haze
(Sand Bank®)



Wheat
(Harvest®)



Earthtone
(Bushland®)



Optional COLORBOND® colours are available but may be subject to surcharge and/or delivery delay. Due to printing differences, some colours may vary. COLORBOND® and colour names are registered trademarks of Blue Scope Steel Ltd.™ Colour names are trademarks of Blue Scope Steel Ltd. Coerco colours represented match COLORBOND® steel colours.



coerco
Engineered Poly Products

9 Huggett Drive
Dalwallinu
Western Australia 6609
PO BOX 319 Dalwallinu
Western Australia 6609

Phone 08 9661 0610
Fax 08 9661 1515
info@coerco.com.au

Freecall 1800 646 277
www.coerco.com.au